

aladdin[®]

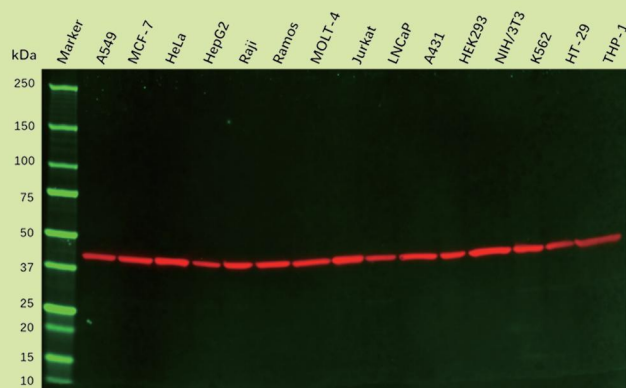


阿拉丁[®] 抗体产品

Antibody Products

抗体 是免疫系统对外来物质的存在作出反应而产生的蛋白质。抗体在各个领域有着不同的应用，包括医学、研究、诊断和治疗等。阿拉丁强势推出现货优质抗体，具有命名和规格清晰明了、**特异性好、灵敏度高、稳定性强、适用于多种通用验证平台等优势。**

验证结果-Western Blot

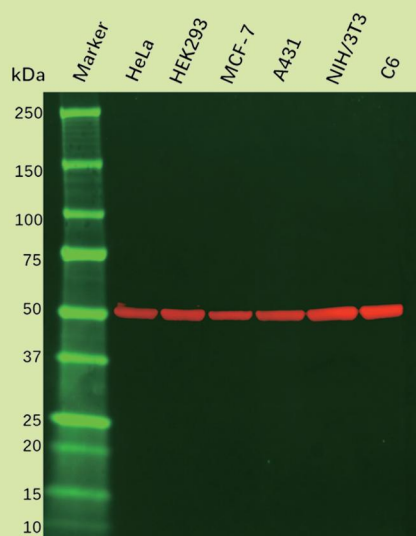


Western Blot - beta Actin Mouse mAb [2D10] (Ab155822)

All lanes : beta Actin Mouse mAb (Ab155822) at 0.1 μ g/mL.
Lysates at 20 μ g per lane.

Predicted band size: 42 kDa

Observed band size: 42 kDa

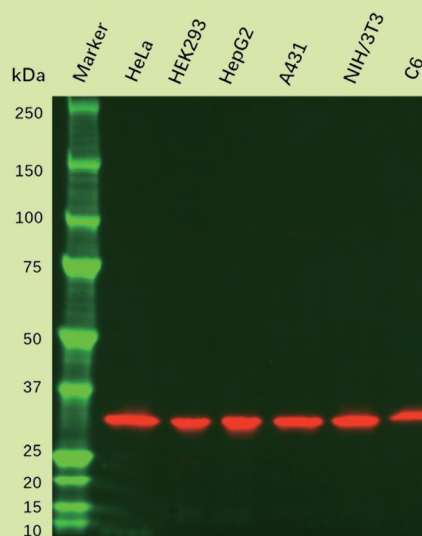


Western Blot - beta Tubulin Mouse mAb [2F1] (Ab155823)

All lanes : beta Tubulin Mouse mAb [2F1] (Ab155823) at 0.1 μ g/mL.
Lysates at 20 μ g per lane.

Predicted band size: 49 kDa

Observed band size: 50 kDa



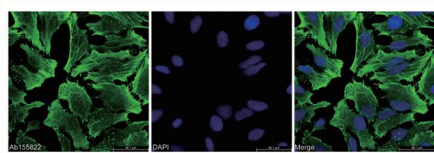
Western Blot - PCNA Mouse mAb [3D7] (Ab155826)

All lanes : PCNA Mouse mAb [3D7] (Ab155826) at 0.5 μ g/mL.
Lysates at 20 μ g per lane.

Predicted band size: 29 kDa

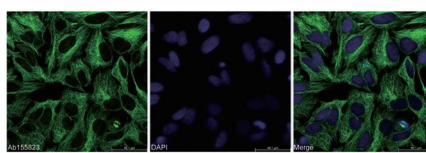
Observed band size: 29 kDa

验证结果-Immunocytochemistry/ Immunofluorescence



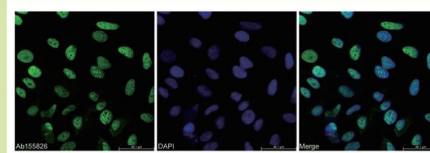
Immunocytochemistry / Immunofluorescence
- beta Actin Mouse mAb [2D10] (Ab155822)

Ab155822 staining beta Actin in HeLa cells by Immunocytochemistry/Immunofluorescence. Cells were fixed in methanol. Primary antibody was used at 0.5µg/mL. An Alexa Fluor 488 conjugated Goat Anti-mouse IgG was used as the secondary antibody at a 1/1000 dilution.



Immunocytochemistry / Immunofluorescence
- beta Tubulin Mouse mAb [2F1] (Ab155823)

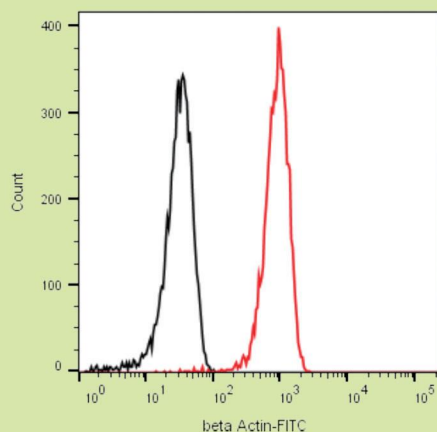
Ab155823 staining beta Tubulin in HeLa cells by Immunocytochemistry/Immunofluorescence. Cells were fixed in methanol. Primary antibody was used at 0.5µg/mL. An Alexa Fluor 488 conjugated Goat Anti-mouse IgG was used as the secondary antibody at a 1/1000 dilution.



Immunocytochemistry / Immunofluorescence
- PCNA Mouse mAb [3D7] (Ab155826)

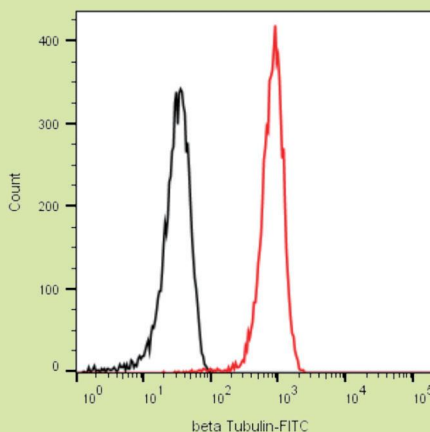
Ab155826 staining PCNA in HeLa cells by Immunocytochemistry/Immunofluorescence. Cells were fixed in methanol. Primary antibody was used at 0.5µg/mL. An Alexa Fluor 488 conjugated Goat Anti-mouse IgG was used as the secondary antibody at a 1/1000 dilution.

验证结果-Flow Cytometry



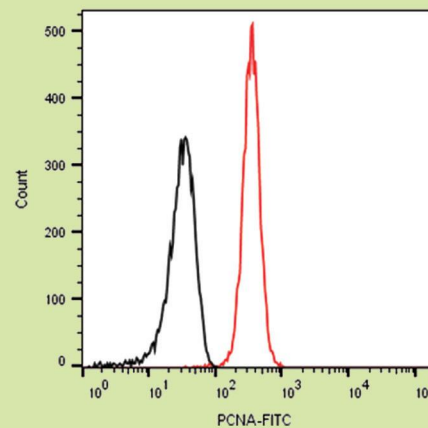
Flow Cytometry (Intracellular)
- beta Actin Mouse mAb [2D10] (Ab155822)

Flow Cytometry analysis of HeLa cells labeling beta Actin with purified Ab155822 at 0.5µg/mL-Red. Cells were fixed and permeabilized with 100% methanol. A Goat Anti-Mouse IgG H&L (FITC) (Ab156254) was used as the secondary antibody. Unlabeled control - Black.



Flow Cytometry (Intracellular)
- beta Tubulin Mouse mAb [2F1] (Ab155823)

Flow Cytometry analysis of HeLa cells labeling beta tubulin with purified Ab155823 at 0.5µg/mL-Red. Cells were fixed and permeabilized with 100% methanol. A Goat Anti-Mouse IgG H&L (FITC) (Ab156254) was used as the secondary antibody. Unlabeled control - Black.

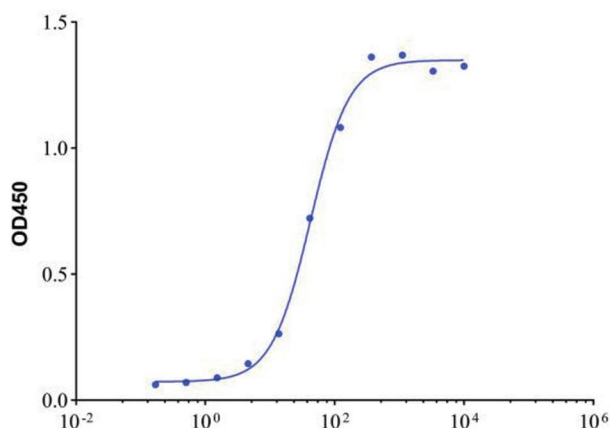


Flow Cytometry (Intracellular)
- PCNA Mouse mAb [3D7] (Ab155826)

Flow Cytometry analysis of HeLa cells labeling PCNA with purified Ab155826 at 0.25µg/mL-Red. Cells were fixed and permeabilized with 100% methanol. A Goat Anti-Mouse IgG H&L (FITC) (Ab156254) was used as the secondary antibody. Unlabeled control - Black.

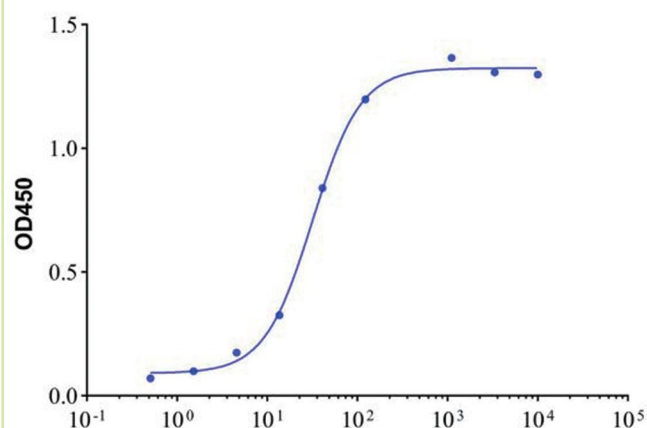
阿拉丁明星现货产品——多种优质抗体对

Ab169474 - Recombinant CY211 Antibody



规格: Recombinant(25A1); Mouse Anti-Human CY211 Antibody; Capture antibody, ELISA, CLIA; Unconjugated

Ab169479 - Recombinant CY211 Antibody



规格: Recombinant(22C4); Mouse Anti-Human CY211 Antibody; Detection antibody, ELISA, CLIA; Unconjugated

特色一抗

| 货号 | 名称 | 类型 | 克隆号 | 宿主 | 反应种属 | 推荐应用平台 |
|----------|----------------------------|------------|-----------|-------|----------------------|--------------------------|
| A412017 | CD25 Rat mAb | Monoclonal | PC-61.5.3 | Rat | Mouse | Flow |
| Ab008098 | Aldosterone Mouse mAb | Monoclonal | 1D2 | Mouse | Human | ELISA, CLIA |
| Ab088587 | AMF Mouse mAb | Monoclonal | 1B7D7 | Mouse | Human | WB, IHC, ICC, IF, ELISA |
| Ab088935 | Annexin A1/ANXA1 Mouse mAb | Monoclonal | 2F1 | Mouse | Human, Mouse, Monkey | ELISA, WB, IHC |
| Ab095961 | CEBPA Mouse mAb | Monoclonal | 4E10 | Mouse | Human | WB, Flow, ELISA |
| Ab112308 | KMT1E/SETDB1 Mouse mAb | Monoclonal | 5H6A12 | Mouse | Human, Mouse, Monkey | WB, ICC, IF, ELISA |
| Ab155822 | beta Actin Mouse mAb | Monoclonal | 2D10 | Mouse | Human, Mouse, Rat | WB, Flow, ICC, IF, ELISA |
| Ab155823 | beta Tubulin Mouse mAb | Monoclonal | 2F1 | Mouse | Human, Mouse, Rat | WB, Flow, ICC, IF, ELISA |
| Ab155826 | PCNA Mouse mAb | Monoclonal | 3D7 | Mouse | Human, Mouse, Rat | WB, Flow, ICC, IF, ELISA |

抗体对

| 货号 | 靶点 | 推荐用途 | 产品类型 | 克隆号 | 宿主 | 推荐应用平台 |
|----------|---------------------|-----------|-------------|-------|-------|---------------------|
| Ab005448 | TSH | Detection | Recombinant | 26C5 | Mouse | CLIA, FIA |
| Ab005598 | TSH | Capture | Recombinant | 38C7 | Mouse | CLIA, ICC, IF |
| Ab005432 | Troponin I/TNNI3 | Detection | Recombinant | 31F1 | Mouse | GICA, LF, FIA |
| Ab005500 | Troponin I/TNNI3 | Capture | Recombinant | 23C12 | Mouse | FIA |
| Ab005500 | Troponin I/TNNI3 | Detection | Recombinant | 23C12 | Mouse | GICA, LF |
| Ab005499 | Troponin I/TNNI3 | Capture | Recombinant | 24A5 | Mouse | GICA, LF |
| Ab005500 | Troponin I/TNNI3 | Detection | Recombinant | 23C12 | Mouse | GICA, LF |
| Ab005748 | Troponin I/TNNI3 | Capture | Recombinant | 35C8 | Mouse | GICA, LF, FIA |
| Ab005500 | Troponin I/TNNI3 | Detection | Recombinant | 23C12 | Mouse | GICA, LF |
| Ab005751 | Troponin I/TNNI3 | Capture | Recombinant | 26G2 | Mouse | GICA, LF |
| Ab008942 | Thyroxine | Detection | Recombinant | 22B1 | Mouse | CLIA, ICC, IF |
| Ab008942 | Thyroxine | Capture | Recombinant | 22B1 | Mouse | CLIA, ICC, IF |
| Ab130169 | TAG72 | Detection | Recombinant | 29C4 | Mouse | ELISA, CLIA |
| Ab169487 | TAG73 | Capture | Recombinant | 25D9 | Mouse | ELISA, CLIA |
| Ab127166 | SerpinB3/SCCA | Detection | Recombinant | 25F7 | Mouse | ELISA, CLIA |
| Ab127167 | SerpinB4/SCCA | Capture | Recombinant | 22E3 | Mouse | ELISA, CLIA |
| Ab008099 | ProGRP | Detection | Recombinant | 21D1 | Mouse | ELISA, CLIA |
| Ab008100 | ProGRP | Capture | Recombinant | 27H3 | Mouse | ELISA, CLIA |
| Ab007922 | Pepsinogen I | Detection | Recombinant | 31F2 | Mouse | ELISA, CLIA |
| Ab007923 | Pepsinogen I | Capture | Recombinant | 21A6 | Mouse | ELISA, CLIA |
| Ab008803 | Luteinizing Hormone | Detection | Recombinant | 23A7 | Mouse | CLIA, GICA, FIA |
| Ab113723 | Luteinizing Hormone | Capture | Recombinant | 33C3 | Mouse | CLIA, GICT, ICC, IF |

| 货号 | 靶点 | 推荐用途 | 产品类型 | 克隆号 | 宿主 | 推荐应用平台 |
|----------|--------------|-----------|-------------|------|-------|----------------------------|
| Ab007972 | H-FABP | Detection | Recombinant | 24F1 | Mouse | ELISA, GICA, LF, FIA |
| Ab107394 | H-FABP | Capture | Recombinant | 26H2 | Mouse | ELISA, CLIA, FIA |
| Ab107124 | HE4 | Detection | mAb | 2E11 | Mouse | ELISA, CLIA |
| Ab107125 | HE5 | Capture | Recombinant | 25B3 | Mouse | ELISA, CLIA |
| Ab008172 | D-Dimer | Detection | Recombinant | 33A6 | Mouse | ELISA, CLIA, GICA, LF, FIA |
| Ab008121 | D-Dimer | Capture | Recombinant | 32D2 | Mouse | ELISA, CLIA, GICA, LF, FIA |
| Ab169479 | CY211 | Detection | Recombinant | 22C4 | Mouse | ELISA, CLIA |
| Ab169474 | CY212 | Capture | Recombinant | 25A1 | Mouse | ELISA, CLIA |
| Ab007319 | CEACAM5 | Detection | mAb | 3E3 | Mouse | ELISA, CLIA |
| Ab095938 | CEACAM6 | Capture | Recombinant | 37C4 | Mouse | ELISA, CLIA |
| Ab116378 | CA153 | Detection | Recombinant | 25A3 | Mouse | ELISA, CLIA |
| Ab005519 | CA154 | Capture | Recombinant | 27B9 | Mouse | ELISA, CLIA |
| Ab005424 | PSA | Detection | mAb | 3B5 | Mouse | ELISA, CLIA |
| Ab005494 | PSA | Capture | mAb | 3D2 | Mouse | ELISA, CLIA |
| Ab008129 | PLA2G7 | Detection | mAb | 18A6 | Mouse | GICA, FIA |
| Ab008130 | PLA2G8 | Capture | mAb | 11G5 | Mouse | GICA, FIA |
| Ab005528 | CA125 | Detection | mAb | 4A5 | Mouse | ELISA, CLIA |
| Ab005524 | CA126 | Capture | mAb | 4F8 | Mouse | ELISA, CLIA |
| Ab007318 | AFP | Detection | mAb | 2H3 | Mouse | ELISA, CLIA |
| Ab007317 | AFP | Capture | Recombinant | 27C9 | Mouse | ELISA, CLIA |
| Ab007934 | Progesterone | Detection | Recombinant | 36H1 | Mouse | ELISA, CLIA |
| Ab007934 | Progesterone | Capture | Recombinant | 36H1 | Mouse | ELISA, CLIA |
| Ab005526 | CA199 | Detection | Recombinant | 30C8 | Mouse | ELISA, CLIA |
| Ab005526 | CA199 | Capture | Recombinant | 30C8 | Mouse | ELISA, CLIA |

| 货号 | 靶点 | 推荐用途 | 产品类型 | 克隆号 | 宿主 | 推荐应用平台 |
|----------|--------------|-----------|-------------|-------|-------|-------------|
| Ab007933 | Testosterone | Detection | Recombinant | 27B4 | Mouse | ELISA, CLIA |
| Ab007933 | Testosterone | Capture | Recombinant | 27B4 | Mouse | ELISA, CLIA |
| Ab008403 | E2 | Detection | Recombinant | 27F11 | Mouse | ELISA, CLIA |
| Ab008403 | E2 | Capture | Recombinant | 27F11 | Mouse | ELISA, CLIA |
| Ab007790 | PGII | Detection | Recombinant | 34G7 | Mouse | ELISA, CLIA |
| Ab007791 | PGII | Capture | Recombinant | 38C9 | Mouse | ELISA, CLIA |
| Ab008804 | Progesterone | Detection | Recombinant | 33C7 | Mouse | ELISA, CLIA |
| Ab008804 | Progesterone | Capture | Recombinant | 33C7 | Mouse | ELISA, CLIA |

特色二抗

| 货号 | 名称 | 类型 | 宿主 | 反应种属 | 推荐应用平台 |
|----------|------------------------------------|------------|---------|---------|------------------|
| Ab008417 | Chicken IgY Antibody | Polyclonal | Chicken | - | LF, GICA, FIA |
| Ab109057 | Mouse Anti-Human IgG Antibody | Monoclonal | Mouse | Human | ELISA, CLIA |
| Ab109080 | Mouse Anti-Human IgM Antibody | Monoclonal | Mouse | Human | ELISA |
| Ab115835 | Goat Anti-Mouse IgG H&L Antibody | Polyclonal | Goat | Mouse | ELISA, LF, GICA |
| Ab124281 | Goat Anti-Rabbit IgG H&L Antibody | Polyclonal | Goat | Rabbit | ELISA, LF, GICA |
| Ab169470 | Goat Anti-Chicken IgY H&L Antibody | Polyclonal | Goat | Chicken | ELISA, LF, GICA |
| Ab137759 | Goat Anti-Chicken IgY H&L (HRP) | Polyclonal | Goat | Chicken | WB, IHC-P, ELISA |
| Ab137905 | Goat Anti-Human IgG H&L (HRP) | Polyclonal | Goat | Human | WB, IHC, ELISA |
| Ab138040 | Goat Anti-Mouse IgG H&L (HRP) | Polyclonal | Goat | Mouse | WB, IHC, ELISA |
| Ab139791 | Mouse Anti-Human IgG H&L (HRP) | Monoclonal | Mouse | Human | ELISA |
| Ab141622 | Rabbit Anti-Mouse IgG H&L (HRP) | Polyclonal | Rabbit | Mouse | WB, IHC-P, ELISA |
| rp155876 | Streptavidin (HRP) | - | - | - | Flow, IF |
| np156148 | Streptavidin (FITC) | - | - | - | ELISA, WB |

aladdin®

阿拉丁®

上海阿拉丁生化科技股份有限公司

官网: www.aladdin-e.com

服务单: 官网首页右下角【联系客服】

地址: 上海市浦东新区新金桥路36号上海国际财富中心南塔16楼

电话: 400-620-6333

1号线-产品订购

2号线-订单、货期或发货查询

3号线-账单及发票

5号线-技术咨询

6号线-订单售后

传真: 021-50323701

