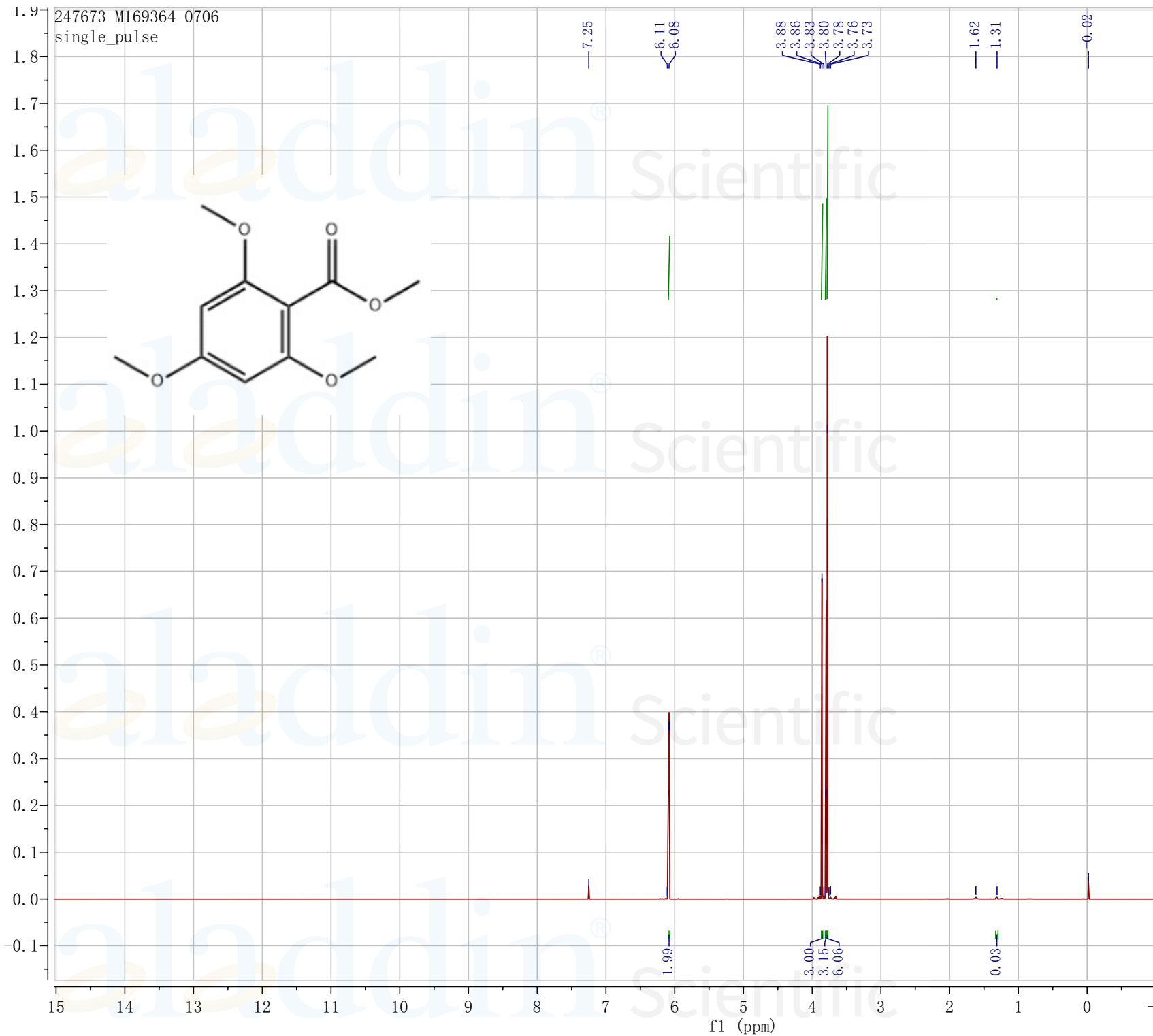


247673 M169364 0706  
single\_pulse



Filename	= 150408 B179122 110
Author	= delta
Experiment	= single_pulse.jxp
Sample_Id	= 150408 B179122 110
Solvent	= CHLOROFORM-D
Field Strength	= 14.09636928 [T] (60
X_Acq_Duration	= 3.3249972 [s]
X_Domain	= Proton
X_Freq	= 600.1723046 [MHz]
X_Offset	= 5 [ppm]
X_Points	= 50015
X_Prescans	= 1
X_Resolution	= 0.30075213 [Hz]
X_Sweep	= 15.04211793 [kHz]
X_Sweep_Clippped	= 12.03369434 [kHz]
Irr_Domain	= Proton
Irr_Freq	= 600.1723046 [MHz]
Irr_Offset	= 5 [ppm]
Tri_Domain	= Proton
Tri_Freq	= 600.1723046 [MHz]
Tri_Offset	= 5 [ppm]
Blanking	= 2 [us]
Clipped	= FALSE
Scans	= 8
Total_Scans	= 8
Relaxation_Delay	= 2 [s]
Recvr Gain	= 56
Temp_Get	= 22.4 [dC]
X_90_Width	= 8.302 [us]
X_Acq_Time	= 3.3249972 [s]
X_Angle	= 45 [deg]
X_Atn	= 8.1 [dB]
X_Data_Points	= 65536
X_Points_Default	= 50141
X_Points_Input	= 40012
X_Pulse	= 4.151 [us]
X_Sweep_Input	= 20 [ppm]
Irr_Mode	= Off
Tri_Mode	= Off
Dante_Loop	= 200
Dante_Preset	= FALSE
Decimation_Rate	= 0
Default_X_Resolution	= 0.3 [Hz]
Experiment_Path	= C:\Users\delta\Desktop
Initial_Wait	= 1 [s]
Phase	= {0, 90, 270, 180,
Preset_Time	= 2 [s]
Preset_Time_Flag	= FALSE
Rd_Def_Temp	= 1.6750028 [s]
Relaxation_Delay_Calc	= 0 [s]
Relaxation_Delay_Default	= 5 [s]
Repetition_Time	= 5.3249972 [s]
Rpt_Def_Temp	= 5 [s]
Rpt_Min	= 2.1946552 [s]